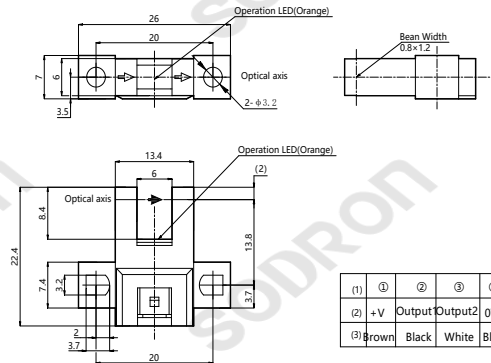


**Dimensions****Model**

PU-K68  
PU-K68P

**Technical parameters**

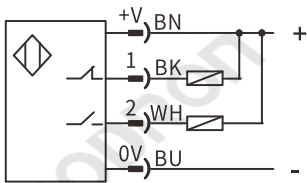
Detection method	Through beam
Model	NPN PU-K68 PNP PU-K68P
Output mode	Light-ON+Dark-ON
Sensing distance	Slot Width: 6mm
Standard target	> 1.2*0.8mm (Opaque object)
Light source	940nm infrared light
Differential	<0.05mm
Repeat accuracy	<0.01mm
Supply power	< 5-24V DC±10%
Residual Voltage	< 1V (Load Current: ≤50mA)
Current consumption	<15mA
Load Current	≤50mA

**Product features**

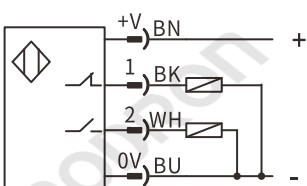
- Through beam
- Fast response, High frequency
- IEC IP40

**Connection**

NPN



PNP



Circuit protection	Reverse polarity connection, Short circuit protection, overload protection
Response Frequency	> 1kHz
Indicator light	Output LED: orange
Connection	Connector type
Ambient temperature	Work:-25°C~+55°C Store:-30°C-80°C(No dew condensation or icing allowed)
Ambient humidity	Work: 5~85%RH, Store: 5~95%RH, (No dew condensation)
Ambient illumination	Sunlight: 10,000Lx Lamplight: 3,000Lx
Anti-vibration	10~55Hz double-amplitude 1.5mmX,Y,Z 2h
Withstand voltage	1000VAC,50/60Hz 1min between current-carrying parts and case
Insulation resistance	≥ 20 MΩ (500 VDC, terminals to housings)
Impact resistance	500 m/s <sup>2</sup> (X, Y, Z directions, 3 times)
Protection degree	IEC IP40
Housing	PBT
Material	Display Cover Polycarbonate (PC)